

Enclosure Installation Instructions

E-Z-GO RXV/Freedom RXV



LJ'S TOPS & BOTTOMS

"Specializing in Golf Car Enclosures"

3050 S.W. 14th Place, Suite #11

Boynton Beach, Florida 33426

Ph: (561)736-7868 Fax: (561)375-9171

WWW.LJSTOPSANDBOTTOMS.COM

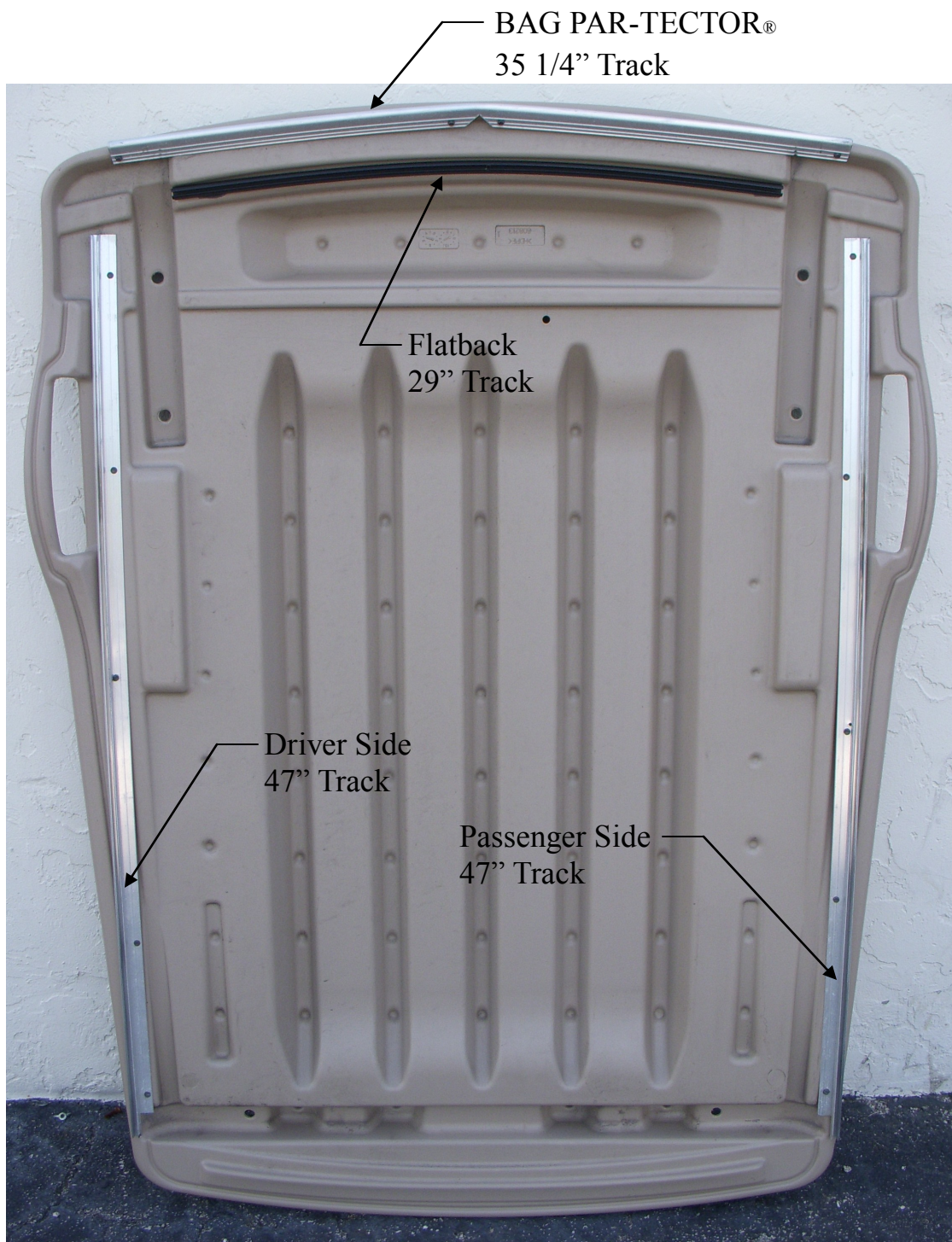
IMPORTANT

**IT IS IMPERATIVE THAT YOU READ THE FOLLOWING
INSTALLATION INSTRUCTION PAGES THOROUGHLY
BEFORE YOU BEGIN TO INSTALL THE ENCLOSURE.**

Table of contents

Track Placement Guide.....	Pg. 1
Front Valance.....	Pg. 2
Flat Back	Pg. 3
Enclosure Sides.....	Pg. 6
The Bag Par-Tector®.....	Pg. 10

Track Placement Guide



Front Valance

Parts:

- 1-Front Valance
- 1-Front Valance Track
- 3-Hex Head Self Drilling Screws

Installation Instructions:

1. Begin by folding down the front windshield to provide yourself with adequate working space and to avoid accidental damage or injury.
2. Position the front valance track on the bottom of the front roof support. The two V-notches in the track should wrap around the roof support bolts if positioned correctly. Secure the track with the supplied hex head self drilling screws in the 3 locations as shown in figure 1-1.
3. Slide the front valance into the newly installed track.
4. Fold the front windshield back up to its original position.
5. The front valance is shipped with self adhesive Velcro attached to the bottom. Peel off the plastic backing from the Velcro exposing the adhesive and apply the Velcro to the bottom of the windshield flange.

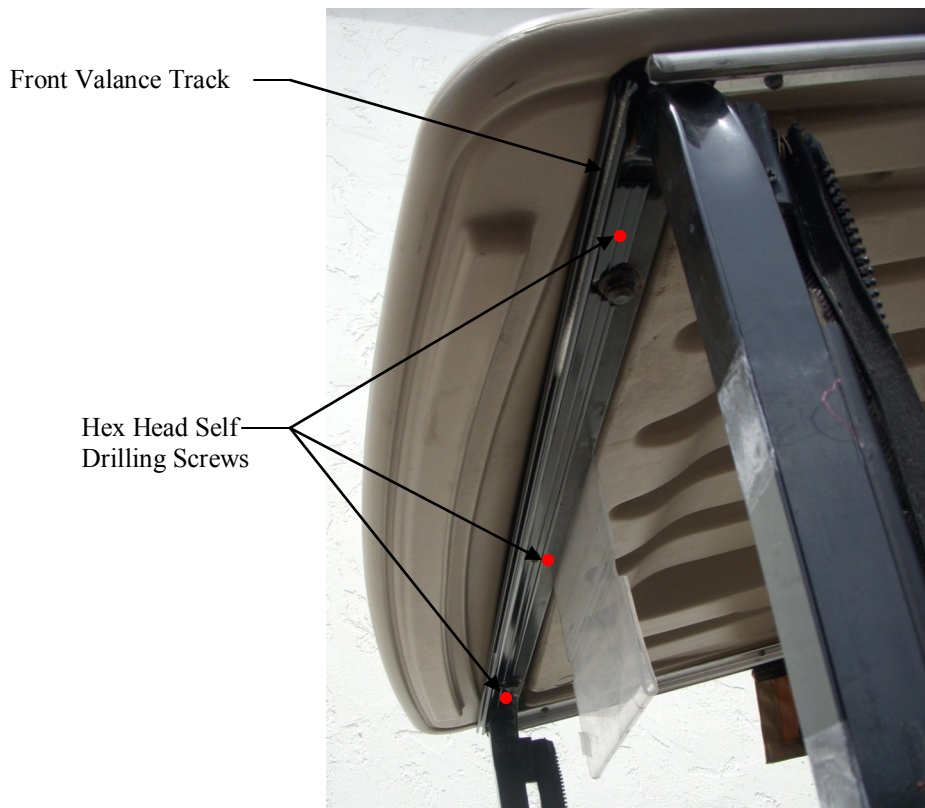


Figure 1-1

Flatback

Parts:

- 1-Flat Back
- 1-Flat Back Track
- 1-Flat Back Extension
- 3-Flat Head Self Drilling Screws
- 1-Self Adhesive Velcro 8" long
- 1-Adhesion Promoter
- 1-Snap Screw

Installation Instructions:

IMPORTANT: YOU NEED TO UNDERSTAND AND VISUALIZE THE LOCATION AND PLACEMENT OF THE TRACK BECAUSE YOU WILL BE USING AN ADHESION PROMOTOR THAT CLEANS AND DRIES RAPIDLY. IT IS RECOMMENDED THAT SURGICAL LATEX GLOVES ARE USED TO APPLY ADHESION PROMOTER TO PREVENT STICKY FINGERS.

1. Begin by installing the flat back track in the location as shown in figure 2-1. Apply the adhesion promoter to the surface area of where the flat back track is to be installed. Immediately after applying the adhesion promoter remove the plastic backing from the track and adhere the flat back track to the proper location on the roof.
2. Install three flat head self drilling screws in the locations shown in figure 2-1.
3. Slide the flat back into the newly installed track. Make sure when installing the flat back that the flat back valance is on the inside of the golf cart.
4. Attach the flat back extension between the two flat back flaps, the extension and flaps both have Velcro preinstalled. When installed the extension should be between the seat bottom and the seat back as shown in figure 2-2
5. Remove the seat bottom from the golf cart. Take the supplied 8" long Velcro and cut it into two equal lengths of 4". Attach the two strips of Velcro to the bottom of the flat back flaps as shown in figure 2-2. The Velcro is to be installed on the inside of the seat bottom support flange as shown in figure 2-3. **Important:** Clean all surfaces prior to adhering Velcro to golf cart surfaces. Once surfaces have been cleaned, peel off the plastic backing from Velcro and attach to the inside surface of the seat bottom support flange.
6. Install a snap screw in the rear seat as shown in figure 2-4. Please note that the snap screw is not a self drilling screw and a pilot hole should be made with an 1/8" drill bit.

Flatback

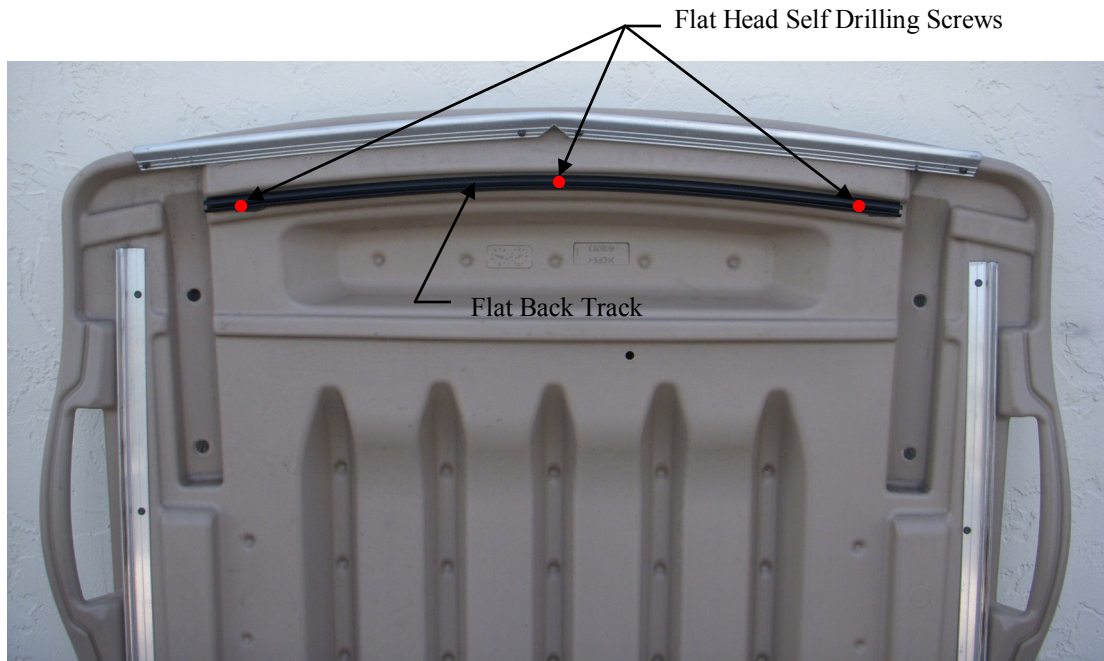


Figure 2-1

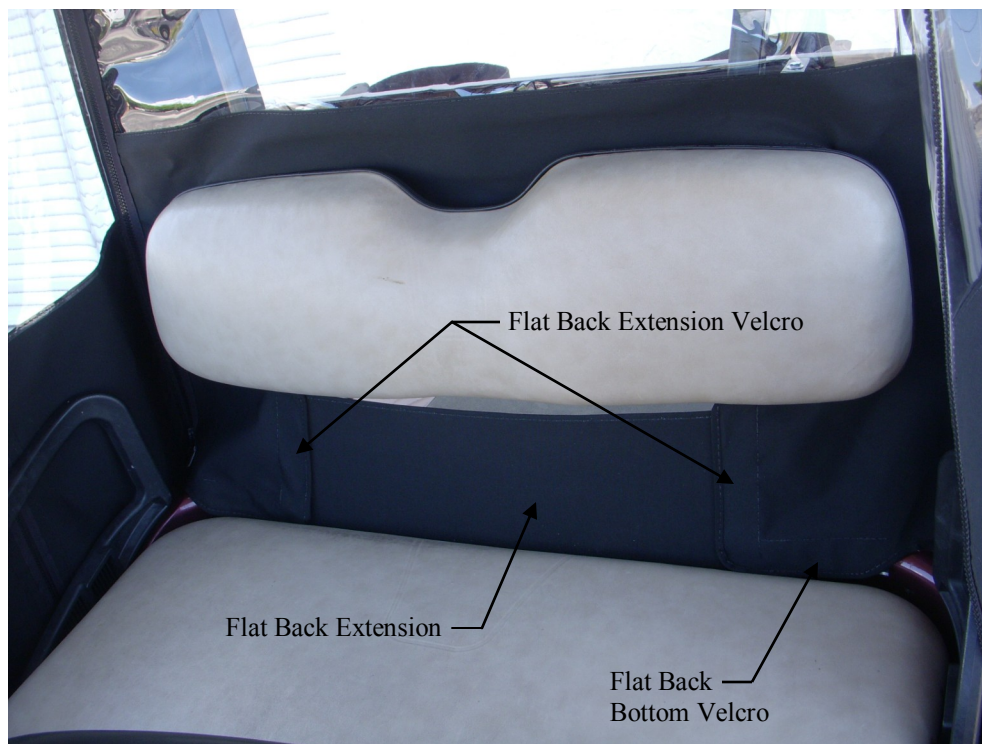


Figure 2-2

Flatback

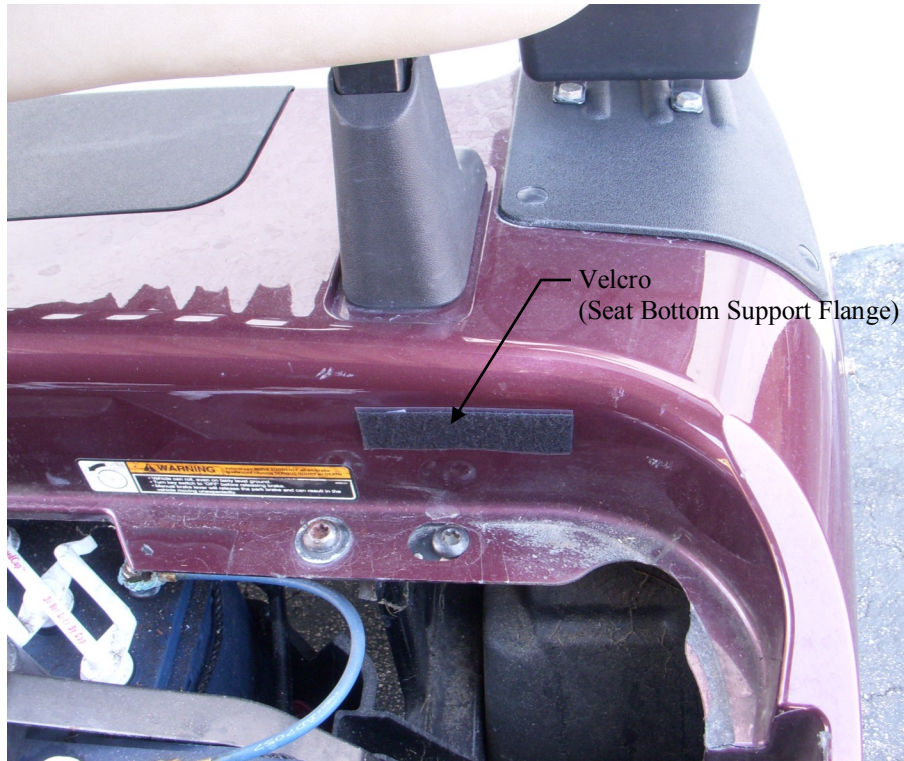


Figure 2-3

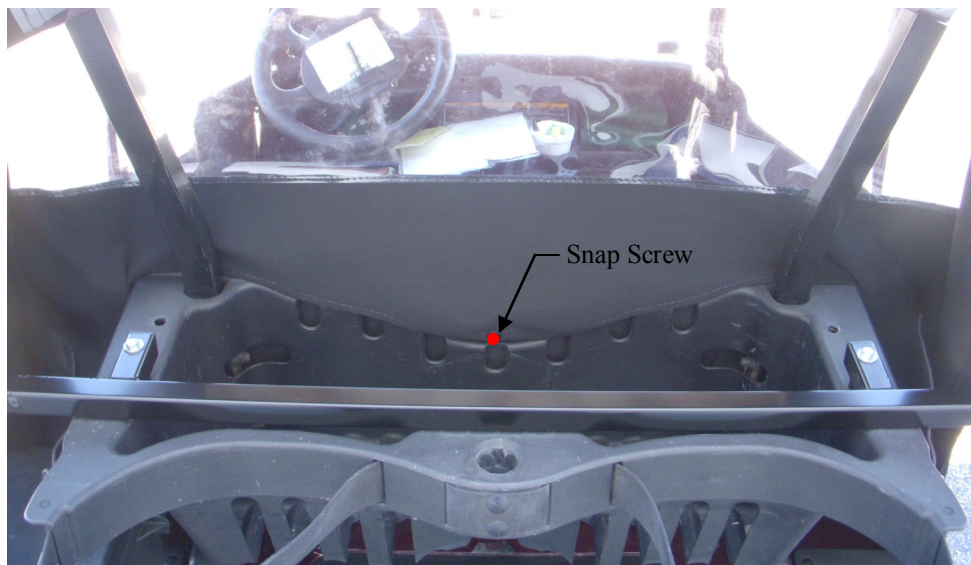


Figure 2-4

Enclosure Sides

Parts:

1-Driver Side Enclosure	2-No Velcro tracks
1-Passenger Side Enclosure	12-Flat Head Self Drilling Screws
1-Driver No Velcro Piece (zipper)	10-Hex Head Self Drilling Screws
1-Passenger No Velcro Piece (zipper)	12-Snap
1-Driver Side Track	12-Snap Screw
1-Passenger Side Track	

Installation Instructions:

1. Begin by installing the driver side track in the location as shown in figure 3-1. When positioned correctly on the roof the notch on the end of the track should wrap around the front windshield frame. Once the track is in the correct position, secure the track to the roof with the supplied hex head self drilling screws in the 5 locations as shown in figure 3-1.
2. Slide the driver side enclosure on to the newly installed track.
3. Position the front windshield to the upward closed position.
4. Attach the driver side no Velcro piece (zipper) to the front of the driver side enclosure.
5. The welt that slides into the track on the no Velcro piece will need to be notched to fit around the windshield clamp. With the no Velcro piece attached to the side of the curtain pull it up to the side of the windshield frame to mark the notch location on the no Velcro piece. Once you have made your marks remove the no Velcro piece from the side of the curtain and cut out the notch in the welt. When finished it should look similar to figure 3-2.
6. The no Velcro driver side track will need to be cut to fit around the windshield clamp as well. Use the no Velcro piece that you just notched as a guide to mark and cut the no Velcro driver side track. The notch will need to be exactly the same as the no Velcro piece.
7. Install the driver side no Velcro tracks to the back side of the windshield frame. Apply the adhesion promoter to the surface area of where the track is to be installed. Immediately after applying the adhesion promoter remove the plastic backing from the track and adhere the track to the proper location on the windshield frame.
8. Install three flat head self drilling screws on the inside of the no Velcro track securing it to the windshield frame
9. Position the front windshield to the downward open position.
10. Slide the no Velcro piece into the newly installed no Velcro track.
11. Position the front windshield to the upward position as shown in figure 3-3.
12. Zip the enclosure side to the no Velcro piece.
13. From the inside of the golf cart install a flat head self drilling screw into the side of each no Velcro track as shown in figure 3-4.
14. Install snap screw and snap in the bottom of the no Velcro piece as shown in figure 3-5.
Please note that the snap screw is not a self drilling screw and a pilot hole should be made with an 1/8" drill bit.
15. Install snap screws and snaps in the enclosure side as shown in figure 3-6.
16. Repeat the above steps on the passenger side.

Enclosure Sides

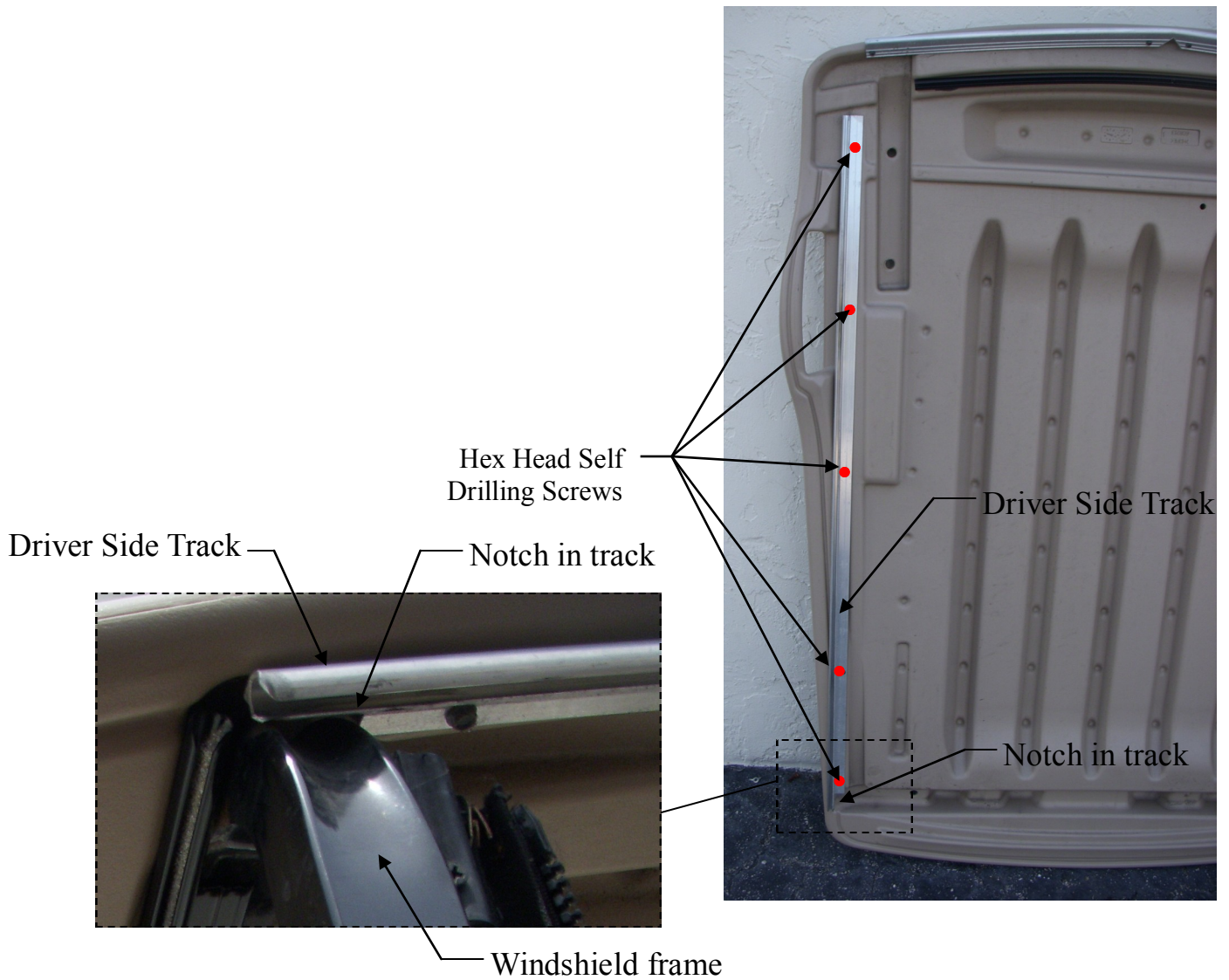


Figure 3-1

Enclosure Sides

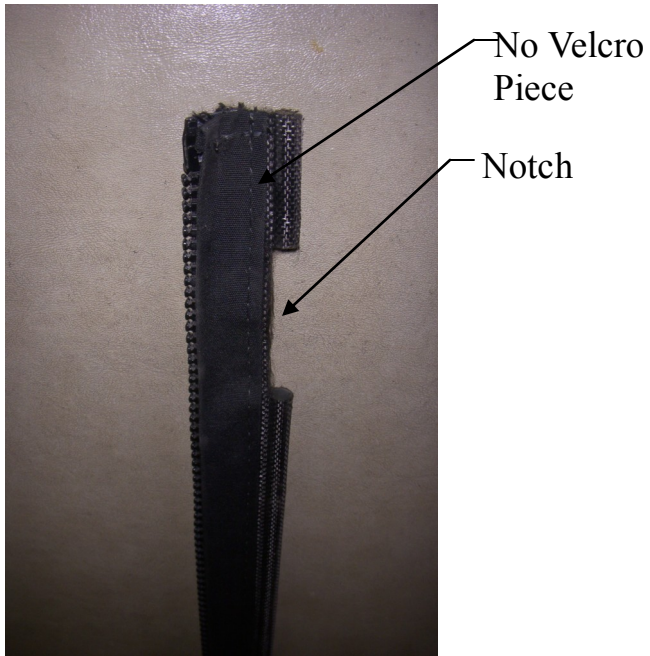


Figure 3-2



Figure 3-3

Flat Head
Screw

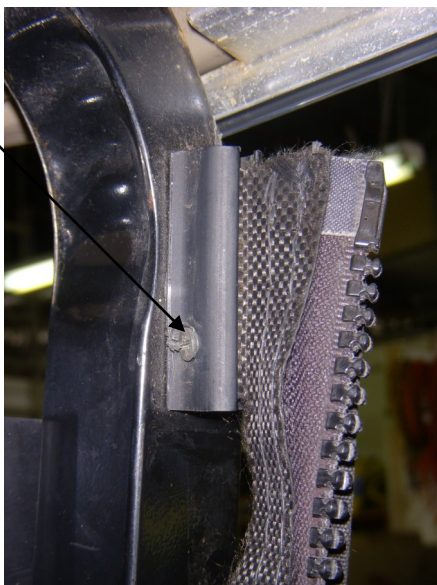


Figure 3-4



Figure 3-5

Enclosure Sides



Figure 3-6

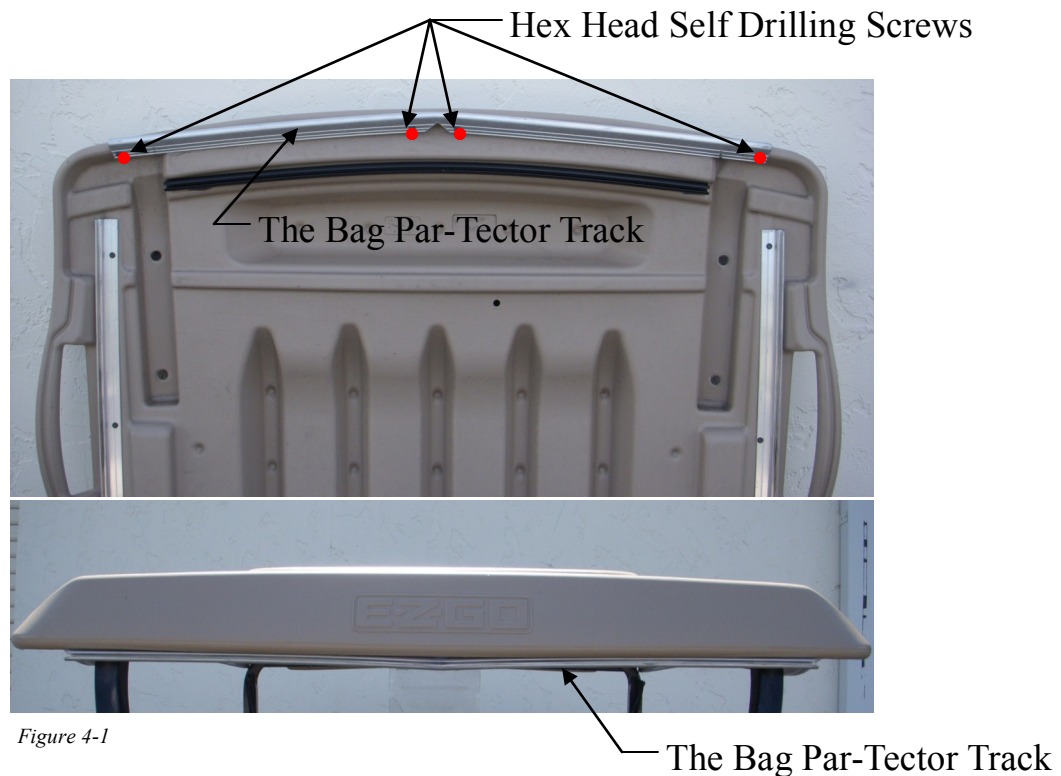
The Bag Par-Tector®

Parts:

- 1-Bag Par-Tector
- 1-Bag Par-Tector Track
- 4-Hex Head Self Drilling Screws
- 2-Hex Head Bolt
- 2-Washers
- 2-O/S Washers
- 2-Lock Nuts

Installation Instructions:

1. Begin by installing the Bag Par-Tector track in the roof. Position the track in the correct location and secure it with 4 hex head self drilling screws as shown in figure 4-1.
2. Slide the Bag Par-Tector into the newly installed track.
3. Attach the Bag Par-Tector crossmember to the bag rack as shown in figure 4-2. Position the crossmember on top of the bag rack and secure with the supplied hex head bolts. Please see figure 4-3 and figure 4-4 for bolt configuration.



The Bag Par-Tector

